



Direct Planning

What's new in Direct Planning 3.3?



**4 Rue Albert Dennerly – BP 2630
37026 Tours cedex 1
France**



Version 3.3 features many evolutions! Between exclusive functions and optimisations, we focused our efforts on Direct Planning's usability and customization options to help you schedule with ever more efficiency.

We grouped these features in the various categories below. Click on each for more information:

Contents

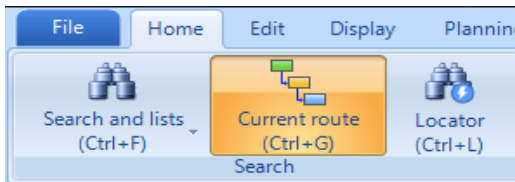
1. Jobs display	3
Current route.....	3
Locator.....	4
2. Moving jobs	6
Locked jobs.....	6
3. Search and custom lists	7
Multiple selections.....	7
Total rows.....	7
4. General configuration	8
Jobs	8
Transition times.....	8
Activating programmable formulas	8
5. Programmable formulas	9
Technical constraints.....	9
Set-up time.....	9
Process Information.....	9
Colours.....	10
Misc.....	10
6. Other evolutions	10

To download Direct Planning 3.3, please visit our [Website](#).

1. Jobs display

Current route

From the Home tab of the ribbon, the “**Current route**” button (Ctrl-G) opens a small window that you can **position freely**. You can minimize this window by clicking “**See less**” or by double-clicking on the header.



“Current route” button under the Home tab

Current route (Ctrl+G)					
Machine	Planned	Status	Start date:	End	To
2300	✓	Completed	29/03/16 23:53	30/03/16 08:15	3300
3300	✓	Started	01/04/16 20:13	04/04/16 21:29	5500
5500	✓	Not started	05/04/16 11:40	06/04/16 15:13	

“Current route” window

When you select a job in the schedule, this window displays **all jobs belonging to the same route**. Double-clicking in this table allows you to browse through the schedule by accessing quickly the jobs of the route:



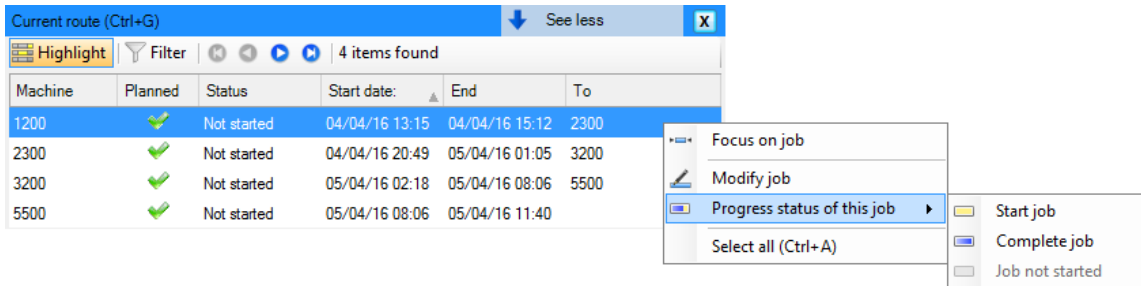
Job localised via double-click in the list

The “**Highlight**” button allows to highlight instantly the **jobs of the route**:

DPX INDUST - 1450 x 959 - S 015: GC2-RO	ETS CONSTANT - 16030218-1-1 : 8000 CIRUS-T/051 BOX to deli	ETS CON
PLATEX L PLATEX #PLATE PLATEX PLATEX #LATEX L TERTIAL - 16030328-1-1 : 30000 PACK SPIRO-M/006 to deliver by 25/04	TERTIAL - 16030328-1-1 : 30000 PACK SPIRO-M/006 to deliver by 25/04	TERTIA
DPX INDUSTRIES - 16030305-1 5 col.: BLACK, CYAN, MAGEN 1211 (Varnish plate)	STORA CARDL DPX INDUST STBJ SOCI S	
COOPALOIRE - 16 COOPA COOPALOIR	COOPALOIRE - 16 COOPA COOPALOIR	
DPX INDUSTRIES - 16030305-1-1 : 240000 7132: 12 blanks 1562 (Braille integration)	DPX INDUSTRIES - 16030305-1-1 : 240000	

Highlighted route

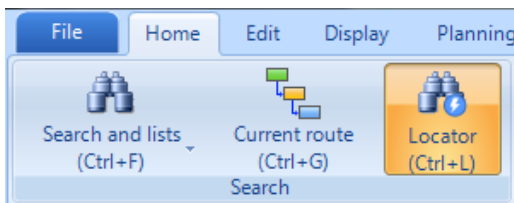
By accessing the **contextual menu** of this table (right click), you can also **modify a job** or change instantly its **progress status** :



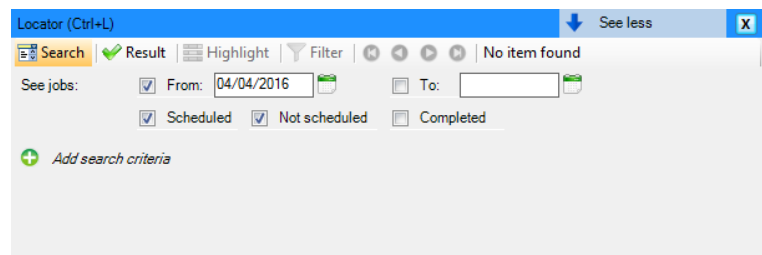
Contextual menu for a job

Locator

From the Home tab of the ribbon, the **“Locator”** button (Ctrl-L) opens a small window dedicated to **quick search**. You can minimize this window by clicking **“See less”** or by double-clicking on the header.

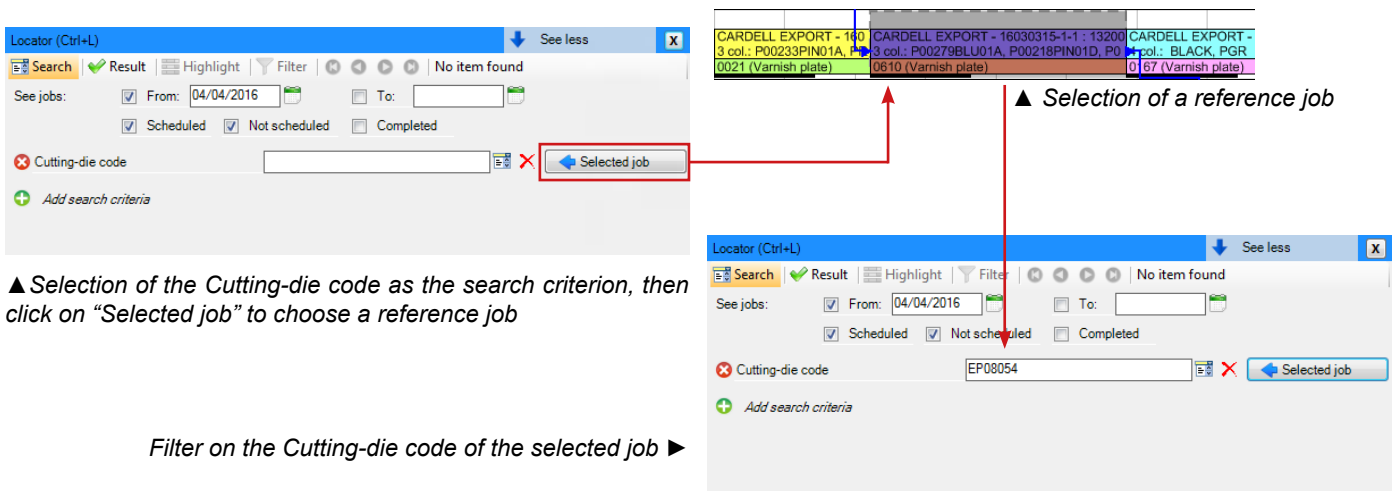


“Locator” button under the Home tab



“Locator” window

A **“Search”** tab allows you to define your **most used** search criteria (e.g.: File number, Tool number, Special technical data, etc.). in addition to more traditional input methods, the **“ ← Selected job”** button allows you to populate a criterion automatically based on that of the currently selected job, thus avoiding keyboard inputs:



The **“Result”** button allows you to execute that search and display the resulting list of jobs. The col-

Columns in this list can be customized by right clicking on the header:

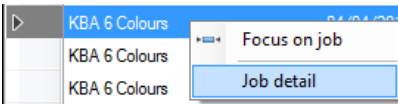
Locator (Ctrl+L) See less				
Search ✔ Result Highlight Filter ◀ ▶ 8 items found				
	Des. of machine	to schedule	Job start	Designation
	KBA 6 Colours		04/04/2016 07:30	OFFSET RECTO - 3 colours - Gloss acrylic
▶	KBA 6 Colours		04/04/2016 11:00	OFFSET RECTO - 3 colours - Gloss acrylic
	KBA 6 Colours		04/04/2016 12:25	OFFSET RECTO - 3 colours - Gloss acrylic
	KBA 6 Colours		04/04/2016 15:11	OFFSET RECTO - 3 colours - Gloss acrylic
	KBA 6 Colours		04/04/2016 16:31	OFFSET RECTO - 3 colours - Gloss acrylic
	KBA 6 Colours		04/04/2016 17:42	OFFSET RECTO - 3 colours - Gloss acrylic
	KBA 6 Colours		04/04/2016 18:53	OFFSET RECTO - 4 colours - Gloss acrylic
	KBA 6 Colours		04/04/2016 20:17	OFFSET RECTO - 4 colours - Gloss acrylic

From the list, a double-click enables **quick navigation** to the job:



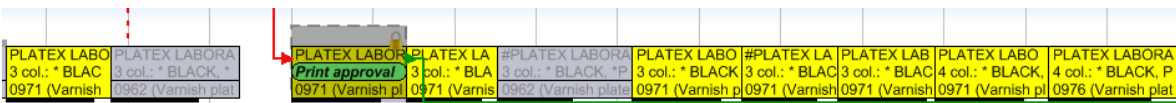
Localisation via double-click

Right clicking allows to **modify** that job (through the “**Job details**” option):



Contextual menu for a job

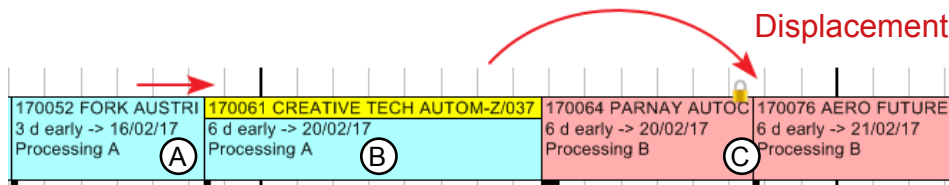
The “**Highlight**” button allows to highlight all found jobs:



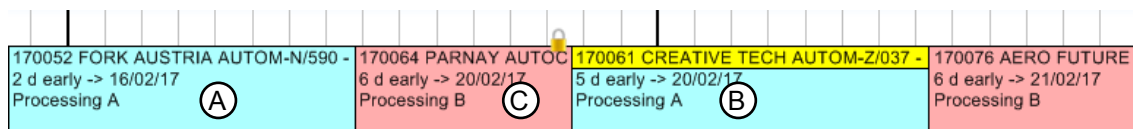
2. Moving jobs

Locked jobs

Up until now, when a first job (A) came to push a second job (B), the latter forced to **overlap** a third **locked** job (C), then B would be **moved beyond** C:

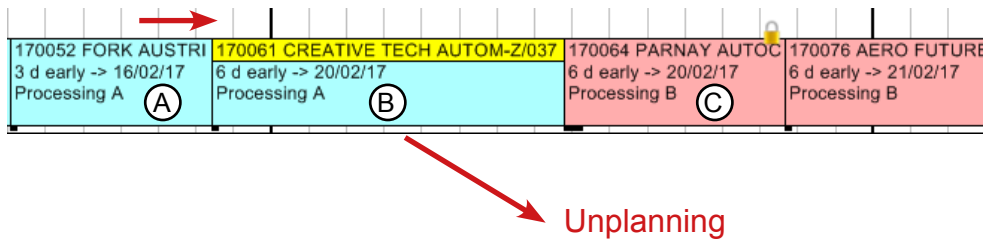


In this example, the duration of A is increased. B is pushed against C (locked)

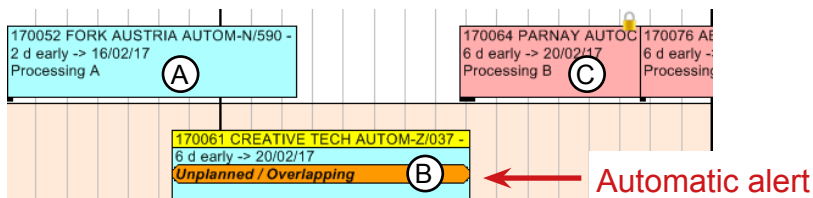


As a result, it is moved behind it

This cascading mechanism could greatly disrupt those plannings which include numerous locked jobs, moving jobs too far in the future. So we changed this mode of operation. Now, in our example, the second job (B) will not be moved beyond the locked job (C), it will be **unplanned**. This will **not only trigger a warning message** for the planner, but an **alert will also be created** on that job to indicate its unplanning due to a displacement on a non-movable job (locked or started):



Same example, the duration of A is increased. B is pushed against C (locked)



As a result, it is unplanned

3. Search and custom lists

Multiple selections

In search windows and custom lists, you can now **select multiple** lines (Ctrl or Shift+Click). The contextual menu (right click) will then propose **grouped actions** for all selected lines (Complete, Schedule, Delete, etc.) :

to sched	Job start	Des. of section	Des. of machine	File no.	Customer designation	Designation	Job duration	Manual alert	Main alert	User alert	Overdue job alert	
✓	01/04/2016 12:05	Cutter	Cutter		COOPALOIRE	CUTTER - With slitting	0:58		Unplanned due to a m...			
	12/04/2016 17:59	Die-cutting	Expertcut 1	16030307-1-1	TERTIAL	DIE-CUTTING - EP06593 16 blanks	2:07		Job is late.		Job is late.	
	12/04/2016 14:52	Die-cutting	Expertcut 2	16030312-1-1	CARDELL EXPORT	DIE-CUTTING - EP08189 15 blanks...	3:54		Job is late.		Job is late.	
	04/04/2016 12:58	Die-cutting	Expertcut 3	16030006-1-1	CARDELL EXPORT	DIE-CUTTING - EP08288 8 blanks	3:28		Job is late.		Job is late.	
	13/04/2016 13:24	Gluer	Alpina 1	16030312-1-1	CARDELL EXPORT	GLUING 1st PASS -	2:25		Job is late.		Job is late.	
	05/04/2016 10:27	Gluer	Masterfold (accubra...	16030006-1-1	CARDELL EXPORT	GLUING 1st PASS -	1:46		Job is late.		Job is late.	
	13/04/2016 16:31	Gluer	Media 45	16030307-1-1	TERTIAL	GLUING 1st PASS -	0:38		Job is late.		Job is late.	
	04/04/2016 11:00	Offset printing	KBA 6 Colours	16030216-1-1	PLATEX LABORATOIRES	OFFSET RECTO - 3 colours - Gloss...	1:25	Print approval wit...	Manual alert : Print ap...			
	04/04/2016 11:00	Offset printing	Outsourced printing	16030097-1-1	CARDELL EXPORT	OFFSET RECTO - 2 colours - Gloss...	1:30	Outsourced emb.	Manual alert : Outsour...			
							18:11					

9 job(s) found

Highlight Filter Modify

Example of multiple selection in the list of jobs with alerts

Total rows

In search windows and custom lists, where relevant, total rows have been added for columns:

	Job duration	Ma
	0:58	
blanks	2:07	
blanks...	3:54	
lanks	3:28	
	2:25	
	1:46	
	0:38	
- Gloss...	1:25 Prin	
- Gloss...	1:30 Out	
	18:11	

Total duration of jobs

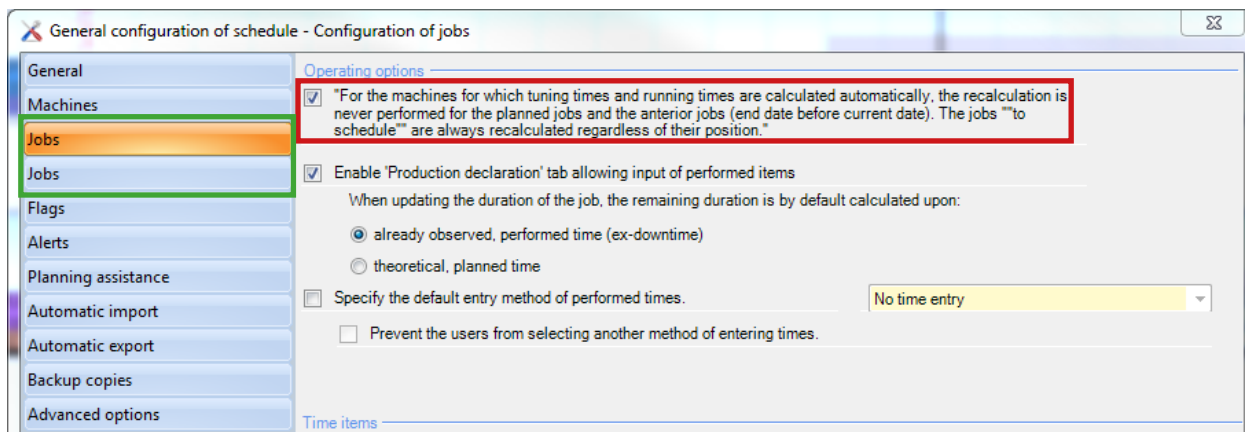
Total row in the list of jobs with alerts

4. General configuration

Jobs

A new **check box** now allows to never calculate automatically the duration for jobs located in the past, so as not to displace both present and future jobs.

The configuration of jobs was also **revamped**, with the inclusion of a menu dedicated to the jobs' configurable areas:



Configuration of jobs in the General configuration

Transition times

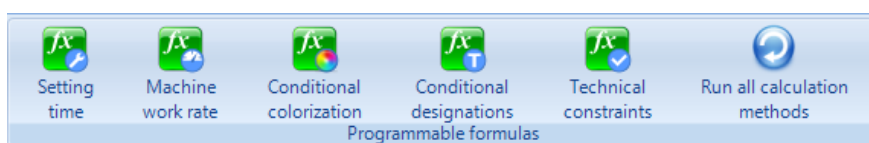
We will soon remove the “**Transition times between jobs**” function. The check box “**Enable transition times between jobs**” is **not available** anymore for the creation of new plannings.

As a reminder, this function will be **removed** in the next version of Direct Planning.

The **programmable formulas** for the calculation of set-up times based on **precedence** replace and enhance this former functionality.

Activating programmable formulas

Version 3.3 **removes** the check box for enabling programmable formulas. The buttons for configuring programmable formulas are now **always displayed** in the Configuration tab:



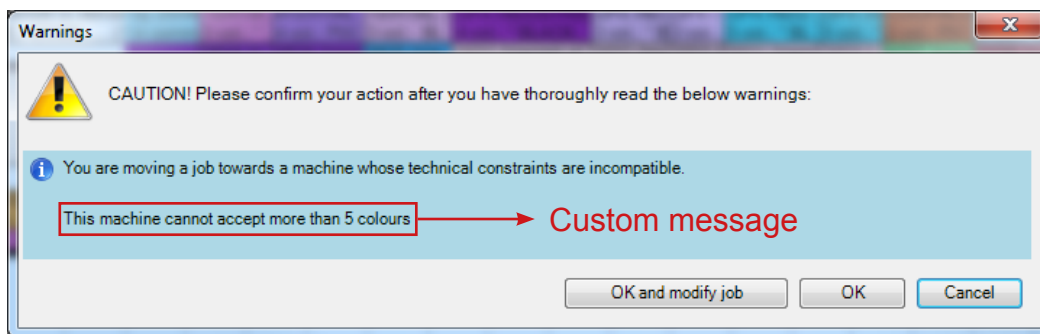
Programmable formulas available under the Configuration tab of the ribbon

5. Programmable formulas

Technical constraints

The “**Technical constraints**” programmable formulas are meant to offer **custom controls** over machine compatibility. These controls are performed when the planner moves a job from a machine to another. This allows you to verify that the technical data of the moved job are compatible with the destination machine.

In addition to these controls, you can define clear messages detailing the origin of the incompatibility to the planner.



Warning message when moving a job towards an incompatible machine

You can specify on each **machine record** the formula governing its **compatibility rules**.

Set-up time

When entering “**Set-up time**” programmable formulas, you could already use **Process Information** data. Now, you can also use **data related to entities**:

```

'-----
' If cutting-die is the same: 5 min are removed from standard gluing or 10 min from gluing with accubraille
'-----
if not TachePrecChangement( Tache.Entite(4).Zone_Configurable_6 , True, False) then
  if Tache.Code_Operation = "COLACC" Then
    TempsReglage = TempsReglage - 10
  Else
    TempsReglage = TempsReglage - 5
  end If
end If

```

Programmable formula for set-up time making use of entities' characteristics (Cutting die in this example)

Process Information

The Tache.Ressource.Est_IP_Actif(X) function informs you whether a Process Information (IP) is active or not for the machine associated with the job.

Colours

The new functions `ChaineVersCouleur`, `ChaineVersNumCouleur` and `NumCouleurVersCouleur` allow you to combine a **character string** (ListeTeintes in the example below) with a colour from Direct Planning's **mosaic of colours**:

```
Case "IMP" → Formula reserved to the "IMP" operation
'----- Printing -----
' Ticket colour based on the first 4 colours (particularly useful to better visualise quadricolour processes)
Dim Teinte1 as string = Tache.Information_Process(3).Zone_Configurable_1
Dim Teinte2 as string = Tache.Information_Process(3).Zone_Configurable_2
Dim Teinte3 as string = Tache.Information_Process(3).Zone_Configurable_3
Dim Teinte4 as string = Tache.Information_Process(3).Zone_Configurable_4
Dim ListeTeintes as string = Teinte1 & " " & Teinte2 & " " & Teinte3 & " " & Teinte4
Couleur = ChaineVersCouleur(ListeTeintes)
```



ETS CONSTAN 4 col.: BLACK,	ETS CO 4 col.: *	ETS C 4 col.:	ETS C 4 col.:	STBJ S 4 col.: *	ETS CONSTA 5 col.: * BLACK	ETS C 4 col.: *	STBJ SOCI 4 col.: * BL	ETS CON 3 col.: * BL	ETS C 3 col.: *
1270 (Varnish p	1270 (V	1270 (1270 (1436 (V	1287 (Varnish	0099 (0646 (Varni	0875 (Varn	0003 (

This programmable formula lets you apply the same colour for jobs sharing their first 4 colours

Misc.

- The programmable formulas editor now opens in **full screen**.
- In the **dictionary**, **colours** are now available for operations, entities, sections, machines and markers.
- In the programmable formulas editor, a **"Configurations"** button is now available to access instantly the configurations of the reference data, entities and Process Informations.

6. Other evolutions

- The **Purging** window was modified to allow **selecting** the reference data to purge. Besides, the special calendars dedicated to the condensed timescales are now also purged.
- In a **display mode**, you can now impose the colour for a specific line of the job. If you impose the colour of 2 consecutive lines governed by the same rule, its appearance will be **more stylish**, without any line separating the two:

170007 - AUTOM-X/223 - Reno
FORK AUSTRIA
Special TX15

Direct Planning 3.2

CARDELL EXPORT - 160	GAEC DE
7342: 12 blanks	7647: 15 b

Direct Planning 3.3

- Now you can open the configuration of a **plugin** even if it is **not activated**.
- In database administration, when a database in "protected mode" is detected, the **"Lift protected mode"** button becomes available.